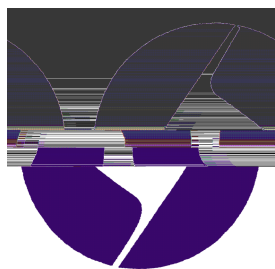


SHAANKI INTERNATIONAL TRUST CO., LTD.



2010 ANNUAL REPORT

.....	2
.....	4
.....	5
.....	7
.....	8
.....	13
.....	18
.....	18
.....	27
.....	29
.....	34
.....	41
.....	42

8
 3.58 1994 11,460.8 1994 7
 13,753.0 1997 12 17,454.8 1999 6
 31,418.7 2006 7
 35,841.3

Shaanxi International Trust Co., Ltd.

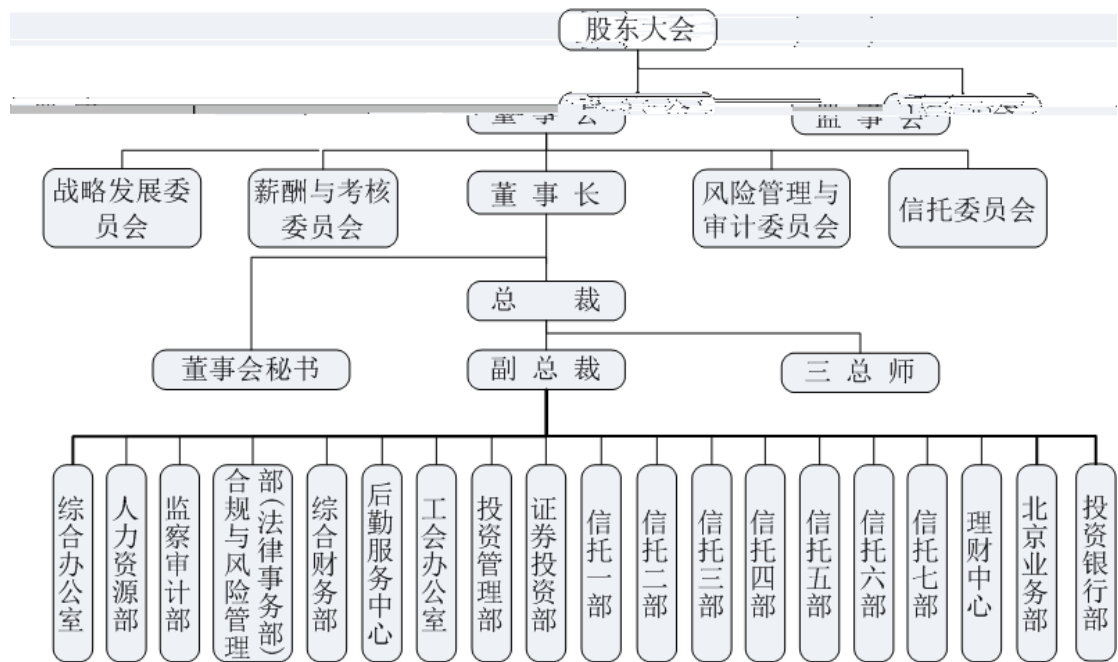
SITC

50
 029 81870262 81870266
 029 88851989-0
 sgtdnc@si ti . com . cn
 50
 710075
 http://www si ti . com . cn
 offi ce@si ti . com . cn

<http://www.cninfo.com.cn>

A
000563

2008 9 16
 K0068H261010001
 610000100141713
 610103220530273
 610102220530273
 22053027-3



	2010	2009		2008
	220,169,096.67	237,908,965.85	-7.46	222,197,938.42
	105,359,977.31	56,435,114.85	86.69	69,842,077.77
	81,517,003.66	43,649,854.80	86.75	68,424,530.18
	43,355,197.99	26,280,661.70	64.97	47,880,012.75
	159,796,891.84	4,554,141.00	3,408.83	84,073,163.35
	2010	2009		2008
	1,204,033,432.99	1,097,085,658.34	9.75	1,546,535,100.33

	742,851,757.06	596,078,630.48	24.62	492,455,870.06
--	----------------	----------------	-------	----------------

	2010	2009		2008
	0.2274	0.1218	86.70	0.1909
	0.2274	0.1218	86.70	0.1909
	0.1210	0.0733	65.08	0.1336
	12.18%	8.02%	4.16	13.31%
	6.48%	4.83%	1.65	9.31%
	0.4458	0.0127	3,410.24%	0.2346

2010	2009
2,490,012.58	-3,434,927.87
	-8,842,420.04
49,255,670.08	32,689,21

2010 12 31

		%
	0	0
	0	0
	358, 413, 026	100
	358, 413, 026	100
	358, 413, 026	100

1
2

3

2010 12 31

1

44113				
		44. 34%	158, 935, 937	A
		1. 51%	5, 400, 000	A
		1. 07%	3, 846, 418	A
		0. 35%	1, 260, 400	A
		0. 30%	1, 080, 000	A
		0. 30%	1, 080, 000	A
		0. 30%	1, 073, 400	A
		0. 28%	1, 000, 000	A
		0. 28%	989, 200	A
		0. 27%	976, 000	A
			10	
			10	

2

1
2
3
4
5
6

2001 6 16

428

10%

10%

10%

			49	2006. 5. 29	49. 66	

53	2006. 5. 29	38. 30
	2006. 2. 6	
46	2006. 5. 29	32. 30
	2006. 2. 6	
57	2006. 5. 29	
59	2009. 7. 27	
43	2009. 7. 27	20. 28
47	2006. 5. 29	4. 5
47	2006. 5. 29	4. 5
47	2007. 9. 6	4. 5

			59			0.3%	
			43				

2

			47	2009 .07. 27			
			47				
			47				

3

			51	2009 .07. 27		44.34%	

			42			0.26%	
			59				

4

			53	2007 .07. 27	22		
			46		19	MBA	
			55		19	EMBA	
			39		13		
			57		18		
			44		5		

5

--	--	--	--

2

3

4

5

6

7.

1

2

3

1.

7 8 1

7 8 1

2009

2009

2 4

2

3.

4
3

2010
2010

1 2010 12 8

2 2011 1 10

2010 2010

2010

3.

4.

2010

2011

1

2

3

1.

2010

2010

2

2010

3.

2010

2010

	2010		2				
1	2010 1	2010 3 27	2010 4 12				2010 4 13
2	2009	2010 4 26	2010 5 17		1. 2009 2. 2009 3. 2009 4. 2009 5. 2009 6. 2010 7. 8.	www.c ninfo .com cn	2010 5 18

1.			20					
	90	200		10			37	
	86, 957. 20		69, 960. 19				2010	
	34							
	82, 926. 49		5. 08%					
	2							
3.			" "					
4.		1						
		2010		20				
	2009							2
								3
	" "	" "		"				
	4							5
								6
				50				
	" 2010		"					
	2010							

1.

			%	%	%	
	7,552,063.55	756,112.61	89.99	-51.39	176.86	8.25
	78,095,561.62	9,095,432.01	88.35	37.38	17.49	1.97
	41,127,796.29	13,849,602.20	66.33	-67.36	-85.85	44.03
	40,964,757.25	27,453,192.88	32.98	247.93	325.60	12.23
	167,740,178.71	51,154,339.70	69.50	-20.18	-54.47	22.97

220,169,096.67

-4,416,217.67

66,696,680.25

2

1

2

3

10%

%%

1

	()	(%)	(%)	2009 ()
	3,941	3.27	1,017	353
	112	0.09	819	12
	252	0.21	-91	2,829
	24,436	20.30	-23	31,749
	1,500	1.25	-70	5,000
	14,274	11.86	-19	17,588
	21,601	17.94	100	0
	4,822	4.00	561	730

2

	2010 ()	2009 ()	()	(%)
	1,196	2,441	-1,245	-51
	6,026	5,293	733	14
	106	569	-463	-81
	-64	-316	252	80
	2,384	1,279	1,105	86

5.

2010

15,980

-13,802

-5,234

-3,056

6.

7.

1

2010

3.32

2010

1,452

2,000

2			2010	200
2010	32			784
1.				
2				
"	"			
3	2011			
2011				
2011		20,000		7,000
,	80			
1			"	"
				TOT
		"		" "
2	"			
3				
4				
2010		49,715		21,874

78 57

1.
1

5,000

69

1		500038		5,050,000.00	500	7,910,000.00	14. 82	1,650,000.00
2		184688		7,073,560.00	600	6,072,000.00	11. 37	300,000.00
3		000973		7,281,062.35	420,400	6,394,284.00	11. 98	-886,778.35
4		002183		6,030,450.25	420,000	4,981,200.00	9. 33	-1,049,250.25
5		601268		5,196,319.58	373,591	4,673,623.41	8. 75	-522,696.17
6		600410		5,431,184.28	250,000	4,457,500.00	8. 35	-973,684.28
7		000158		5,361,763.63	632,043	4,215,726.81	7. 90	-1,146,036.82
8		600210		4,306,000.00	700,000	4,046,000.00	7. 58	-260,000.00
9		002161		2,851,792.32	100,000	3,491,000.00	6. 54	639,207.68
10		300058		3,124,765.86	95,000	3,353,500.00	6. 28	228,734.14
				4,245,702.18		3,794,300.00	7. 11	-451,402.18
								1,594,019.51
				55,952,600.45		53,389,134.22	100	-877,886.72

2

2

" " " "

8

--	--	--	--	--	--	--	--

1		2010 1 13	2010 1 18		1. 2. 3.		2010 1 19
2		2010 3 23	2010 3 26		1 2 2010 3	www.cn info.c om.cn	2010 3 27
3		2010 4 11	2010 4 22		1. 2009 ; 2. 2009 ; 3. 2009 ; 4. 2009 ; 5. 2009 ; 6. 2009 ; 7. 2009 ; 8. 2010 ; 9. 2010 ; 10. ; 11. 2009 ; 12. 2009 ; 13. 2010 ; 14. ; 15. ; 16.		2010 4 26
4		2010 6 13	2010 6 17				

5		2010 6 23	2010 6 25			2010 6 29
6		2010 8 23	2010 8 27		1. 2010 2. 3. 4. 5. 6.	2010 8 30
7		2010 9 3	2010 9 6		1. 2.	2010 9 8
8		2010 10 15	2010 10 20		1. 2 4 2. 2010	2010 10 21

1.				1	2010	2010
5	12	2	30	2705		
	"	"			2	2010
9	16	9	30	2705		

1 2010

2010 6 2

2 2010

2010 9 16

10 30

2701

3
1 2010

2010

12

2705

4 9

2705

2 2010

2010

"

2009

"

4.

2010 12 31

2010

2011 1 17

2009

2010

65, 834, 063. 12

2010

5%

10%

35, 841. 30

10

2010 12 31
0. 5

			%
2007	0	69, 168, 640. 36	0
2008	10, 752, 390. 78	75, 182, 348. 67	14. 3
2009	17, 920, 651. 30	54, 845, 614. 33	32. 7
%	43. 18%		

2010 3 26

2705

2
3.

2010

2010

4.

5.

1. 2010 3 9

2 2010 3 23

3. 2010 6 28

4 2010 8 20

5. 2010 10 18

6. 2010 12 31

2010

"

"

"

"

"

"

1.

2

3.

4.

-

5.

6.

20

2011

1.

2

3.

4.

5

'

"

"

"

"

1

2

2010

1

157. 01	28, 335. 58	25, 131. 03	3, 031. 56
	5. 84	10. 04	
	3, 169. 03	3, 047. 54	
3, 047. 54		2, 046, 780. 43	
2			

2010

3

4

1

60%

5%

2

3

4

			(%)					
600198		6,941,653.68	1.04	4,567,479	19.63	89,659,612.77	0.00	4,110,731.10
601398		11,865,280.00	0.003	2,926,000	4.24	12,406,240.00	0.00	405,720.00
601328		32,662,032.70	0.01	4,870,253	5.48	26,688,986.44	645,000.00	-4,479,784.70
		51,468,966.38				128,754,839.21	645,000.00	36,666.40

			()		
	5,000,000.00	7,368,400	0.74	5,000,000.00	2,578,940.00
	93,000,000.00	61,000,000	2.29	93,000,000.00	0.00
	1,000,000.00			1,000,000.00	0.00
	99,000,000.00			99,000,000.00	2,578,940.00

1,000,000.00

2009 9 29

" " 100%

2010 8 31

2010

2010 8 31

100%

2

2010 4 12 2010

6 1.6 4.86%

[2007 114] 127,954.2

2010 3 27

) 2010 3 27 4 13 1.6

www.cni.nfo.com.cn

2,500 0.48675%

12 2010 6 18

www.cni.nfo.com.cn

2010 12 31

15 1

2006 6 12

439,995,243.46

239,976,258.19

2006 6 17 29

www.cni.nfo.com.cn

2010 12 31 239,976,258.19 130,0

42,679.52 9,521,531.1 120,521,148.42

109,933,578.67

12,050

2009 7 28 5%

5%

5%

5%

40

18

2011

40

2010 5 20 —6 4 12 14 —12 20

2010 01 18	2705			
2010 01 27				
2010 03 12				
2010 03 25				
2010 04 12				D
2010 05 07				
2010 05				D

20				
2010 06 11				2009
2010 06 25				
2010 07 15				D
2010 08 10				
2010 09 17				
2010 10 19				D
2010 11 19				3
2010 12 27				D
2010 12 27				
2010 12 31				

2010 7 16
358, 413, 026

2009

10

0.50

10

0.45

50

30%

30%

2010

2010

65

1	2009 [2009- 42]	1. 16		www.cni.nf.o. com.cn
2	(1) 2009 (2) 2009 [2010- 01]	1. 19		
3	[2010- 02]	1. 20		
4	(1) [2010- 03] ● (2) (3)	3. 9		
5	[2010- 04]	3. 18		
6	(1) [2010- 05] (2) (3) [2010- 06] 4 2010 [2010- 07]	3. 27		
7	(1) 2010 [2010- 08] (2) 2010	4. 13		
8	(1) 2009 (2) 2010 4 (3) 2010 [2010- 12] (4) 2009 (5) (6) 2010 4 (7) 2009 (8) 2009 (9)	4. 26		

	10 11 2009 12 13 2009 14 2009 15 2009 16 2010 17 2010	[2010-10] [2010- 11] [2010- 12]		
9	2009	[2010- 15]	5. 15	
10. 2	(1) 2009 (2) 2009	[2010- 16]	5. 18	
11	(1) (2)	[2010-17]	5. 19	
12		[2010- 18]	5. 25	
13. 2 3	(1) (2) (3) [2010- 20]	[2010- 19]	6. 18	
14	(1) (2) [2010- 21] (3) [2010- 22]		6. 29	
15	2009	[2010- 23]	7. 12	
16	2010	[2010- 24]	7. 15	
17		[2010- 25]	7. 21	
18		[2010- 26]	8. 10	
19	(1) [2010- 27] (2) 2010 (3) 2010 (4) 2010 (5) 2010 8 (6) 2010 8 (7) 2010 8 (8) [2010- 29]	[2010- 28]	8. 30	
20		[2010- 30]	9. 8	
21	[2010- 32]		10. 20	

22	(1) [2010- 31 (2) [2010- 33] (3) (4) 2 4 (5) (6) (7) 2010 (8) 2010 [2010- 35]	10. 21		
23	[2010- 34]	11. 27		

1.

(%)

(%)

	34,387.09	781.08	15.42	0.35	3,153.26	38,337.20	3,169.03	8.27
	25,131.03	157.01	5.84	10.04	3,031.66	28,335.58	3,047.54	10.76

2010



太原路 87 号（甲） FA 86-21 64663920
邮政编码：200031 E- @

西安市含光路南段 1 号 FA 86-29 82306510
邮政编码：710065 E- @

[]

[2011] 001

2010 12 31

2010

2010

2010

(1)

(2)

(3)

2010 12 31

2010

		263,077,986.79	293,642,274.84			25,000,000.00	160,000,000.00
		-	-			-	-
		39,407,134.22	3,529,304.00			-	-
		-	-			-	-
		-	-			-	-
		212,867.67	283,297.22			31,936,006.31	35,802,156.08
		1,115,517.34	121,410.61			7,652,732.11	30,857,745.18
		-	-			30,122,743.47	18,007,315.20
		-	2,358,493.54			39,041,805.21	13,553,019.36
		2,517,717.60	28,290,771.55			5,535,874.48	5,736,742.14
		244,362,255.38	317,494,465.28			1,065,906.32	1,065,906.32
						232,714,569.66	134,659,954.17
						-	-
						67,076,070.16	67,846,769.80
						440,145,707.72	467,529,608.25
		550,693,479.00	645,720,017.04				
						-	-
		15,000,000.00	50,000,000.00				
		142,736,839.21	175,883,767.25			-	-
		216,010,000.00	-			21,035,968.21	33,477,419.61
		-	-				
		99,000,000.00	99,000,000.00			21,035,968.21	33,477,419.61
		48,224,970.53	7,297,510.91			461,181,675.93	501,007,027.86
		44,724,245.35	44,335,844.47				
		1,443,826.34	1,620,106.34			358,413,026.00	358,413,026.00
		11,424,217.14	11,501,709.21			198,291,904.02	115,115,129.80
						-	-
		74,775,855.42	61,726,703.12			51,202,953.01	43,730,280.03
						15,114,158.24	11,822,455.08
						119,829,715.79	66,997,739.57
						-	-
		653,339,953.99	451,365,641.30			742,851,757.06	596,078,630.48
						-	-
						742,851,757.06	596,078,630.48
		1,204,033,432.99	1,097,085,658.34			1,204,033,432.99	1,097,085,658.34

		236,310,245.35	267,512,353.25			-	-
		-	-			-	-
		39,407,134.22	3,529,304.00			-	-
		-	-			-	-
		-	-			-	-
		-	-			-	2,922,825.94
		11,280.00	-			-	-
		-	-			27,622,483.15	17,683,089.53
		-	2,358,493.54			21,579,764.91	3,392,998.74
		1,588,522.30	32,457,881.68			5,495,311.98	5,499,142.14
		-	-			1,065,906.32	1,065,906.32
						23,594,029.32	33,395,077.13
						-	-
						67,076,070.16	67,846,769.80
						146,433,565.84	131,805,809.60
		277,317,181.87	305,858,032.47				
						-	-
		15,000,000.00	50,000,000.00			-	-
		142,736,839.21	175,883,767.25			-	-
		216,010,000.00	-			21,035,968.21	33,477,419.61
		-	-			-	-
		121,000,000.00	121,000,000.00			21,035,968.21	33,477,419.61
		-	-			167,469,534.05	165,283,229.21
		44,634,740.05	44,125,570.16				
		1,443,826.34	1,620,106.34			358,413,026.00	358,413,026.00
		7,925,681.31	6,917,106.35			198,291,904.02	115,115,129.80
		76,212,291.62	63,599,486.95			-	-
						42,206,408.83	35,623,002.52
						15,114,158.24	11,822,455.08
		624,963,378.53	463,146,037.05			120,785,529.26	82,747,226.91
						-	-
						734,811,026.35	603,720,840.31
						-	-
		902,280,560.40	769,004,069.52			902,280,560.40	769,004,069.52

		220,169,096.67	237,908,965.85
		6,795,950.94	15,264,080.16
		7,552,063.55	15,537,178.18
		756,112.61	273,098.02
		69,000,129.61	49,104,555.29
		78,095,561.62	56,845,688.73
		9,095,432.01	7,741,133.44
" _"		66,696,680.25	35,376,358.32
		-	
" _"		-4,416,217.67	401,694.70
" _"		-	-206.29
		41,127,796.29	125,988,636.81
		40,964,757.25	11,773,846.86
		113,945,610.95	184,221,288.24
		13,849,602.20	97,898,380.91
		11,965,332.28	24,409,550.17
		60,257,257.53	52,934,878.23
		1,062,021.37	5,685,935.37
		-641,795.31	-3,157,854.62
		27,453,192.88	6,450,398.18
" _"		106,223,485.72	53,687,677.61
:		15,330.24	3,033,341.44
:		878,838.65	285,904.20
" _"		105,359,977.31	56,435,114.85
		23,842,973.65	12,785,260.05
" _"		81,517,003.66	43,649,854.80
		81,517,003.66	43,649,854.80
		-	-
		0.2274	0.1218
		0.2274	0.1218
		-37,324,355.16	70,725,296.40
		44,192,648.50	114,375,151.20
		44,192,648.50	114,375,151.20

2010

		161,123,413.73	112,642,683.65
		6,795,950.94	10,499,197.78
		7,552,063.55	10,772,295.80
		756,112.61	273,098.02
		69,000,129.61	43,255,366.95
		78,095,561.62	50,996,500.39
		9,095,432.01	7,741,133.44
" _"		66,696,680.25	57,079,742.51
		-	-
" _"		-4,416,217.67	401,694.70
" _"		-	-206.29
		23,046,870.60	1,406,888.00
		75,820,463.89	53,210,151.58
		8,506,144.83	5,459,726.08
		52,114,929.15	45,916,593.45
		-965,168.46	1,459,582.10
		16,164,558.37	374,249.95
" _"		85,302,949.84	59,432,532.07
:		15,330.24	3,032,517.44
:		876,058.65	25,682.70
" _"		84,442,221.43	62,439,366.81
		18,608,158.31	7,593,752.48
" _"		65,834,063.12	54,845,614.33
		0.1837	0.1530
		0.1837	0.1530
		-37,324,355.16	70,725,296.40
		28,509,707.96	125,570,910.73

35,226,922.00	
-32,861,039.35	10,336,944.50
85,647,625.17	49,084,627.18

29,009,097.17	98,063,348.33
---------------	---------------

5,538,053.20	38,108.00
--------------	-----------

216,469,775.05	70,373,882.67
339,030,433.24	227,896,910.68

9,095,432.01	
31,681,720.83	28,285,959.96
45,508,730.51	73,218,442.40
-	1,614,551.23
17,747,493.38	32,863,138.03
75,200,164.67	87,360,678.06
179,233,541.40	223,342,769.68
159,796,891.84	4,554,141.00

□

2010

	-	
	35,226,922.00	
	-32,861,039.35	10,336,944.50
	85,647,625.17	54,506,987.75
	-	
	-	
	-	
	5,538,053.20	38,108.00
	26,180,465.68	9,265,000.00
	119,732,026.70	74,147,040.25
	-	
	-	
	-	
	-	
	9,095,432.01	
	25,131,214.16	20,840,982.44
	-	
	-	
	-	1,614,551.23
	14,073,020.81	5,540,130.28
	34,542,415.73	48,174,580.35
	82,842,082.71	76,170,244.30
	36,889,943.99	-2,023,204.05
	77,748,189.76	50,000,000.00
	16,574,835.71	55,574,523.90
	9,804,656.00	25,653,120.19
	-	-289,550.67
	104,127,681.47	130,938,093.42
	24,796,170.09	1,064,869.18
	237,267,632.26	1,000,000.00
	262,063,802.35	2,064,869.18
	-157,936,120.88	128,873,224.24
	107,764,720.29	
	107,764,720.29	-
	17,920,651.30	10,752,390.78
	17,920,651.30	10,752,390.78
	89,844,068.99	-10,752,390.78
		-206.29
	-31,202,107.90	116,097,423.12
	267,512,353.25	151,414,930.13
	236,310,245.35	267,512,353.25

2010

			:						
	358,413,026.00	115,115,129.80	-	43,730,280.03	11,822,455.08	66,997,739.57	-	-	596,078,630.48
									-
									-
	358,413,026.00	115,115,129.80	-	43,730,280.03	11,822,455.08	66,997,739.57	-	-	596,078,630.48
" -"	-	83,176,774.22	-	7,472,672.98	3,291,703.16	52,831,976.22	-	-	146,773,126.58
						81,517,003.66		-	81,517,003.66
		-37,324,355.16							-37,324,355.16
	-	-37,324,355.16	-	-	-	81,517,003.66	-	-	44,192,648.50
	-	120,501,129.38	-	-	-	-	-	-	120,501,129.38
1									-
2									-
3		120,501,129.38							120,501,129.38
	-	-	-	7,472,672.98	-	-25,393,324.28	-	-	-17,920,651.30
1				7,472,672.98		-7,472,672.98			-
2									
3						-17,920,651.30			-17,920,651.30
4									-
				-	-	-			-
1									-
2									-
3									-
4									-
	-	-	-	-	3,291,703.16	-3,291,703.16	-	-	-
1					3,291,703.16	-3,291,703.16			
2									
	358,413,026.00	198,291,904.02	-	51,202,953.01	15,114,158.24	119,829,715.79	-	-	742,851,757.06

	358,413,026.00	44,389,833.40	:	-	38,337,481.20	9,080,174.36	42,235,355.10	-	492,455,870.06
									-
									-
	358,413,026.00	44,389,833.40	-	38,337,481.20	9,080,174.36	42,235,355.10	-	-	492,455,870.06
" - "	-	70,725,296.40	-	5,392,798.83	2,742,280.72	24,762,384.47	-	-	103,622,760.42

	358,413,026.00	115,115,129.80	:	-	35,623,002.52	11,822,455.08	82,747,226.91	603,720,840.31
								-
	358,413,026.00	115,115,129.80		-	35,623,002.52	11,822,455.08	82,747,226.91	603,720,840.31
" - "	-	83,176,774.22		-				

2010

			:				
	358,413,026.00	44,389,833.40	-	30,138,441.09	9,080,174.36	46,880,845.51	488,902,320.36
							-
							-
	358,413,026.00	44,389,833.40	-	30,138,441.09	9,080,174.36	46,880,845.51	488,902,320.36
" - "	-	70,725,296.40	-	5,484,561.43	2,742,280.72	35,866,381.40	114,818,519.95
						54,845,614.33	54,845,614.33
		70,725,296.40					70,725,296.40
	-	70,725,296.40	-	-	-	54,845,614.33	125,570,910.73
							-
1							-
2							-
3							-
	-	-	-	5,484,561.43	-	-16,236,952.21	-10,752,390.78
1				5,484,561.43		-5,484,561.43	-
2							-
3						-10,752,390.78	-10,752,390.78
4							-
	-	-	-	-	-	-	-
1							-
2							-
3							-
4							-
	-	-	-	-	2,742,280.72	-2,742,280.72	-
1					2,742,280.72	-2,742,280.72	-
2							-
	358,413,026.00	115,115,129.80	-	35,623,002.52	11,822,455.08	82,747,226.91	603,720,840.31

2010 12 31

1
2 50 C
3
4 35,841.3026
5
6 1992
7
1984 1992 1992 30
1992 31
22053027 1994 1 3
1994 1 1994
1 5 1994 1 1994 1 10
2008 8 25 2008 326
K0068H261010001 2008 9 23
610000100141713
8
9

10

2010 12 31

2006

1 1 12 31

"

"

"

"

"

"

"

"

"

"

"

"

1

2

3

1

2

3

4

5

6

-

4

5

1

500

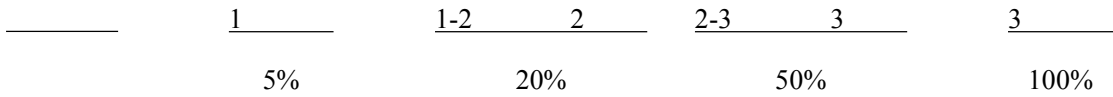
20%

50%

2%

100%

500



□

2

20%

3

1

4

1

1

2

2

3

4

1

4,000

2

3

30

5%

3.167%

4

5%

23.750%

3

5%

31.667%

5

5%

19.00%

4

1

2

3

4

5

6

() ()

7

1

2

3

1

2

1

2

3

3

1

2

3

4

3

5

1

2

/

3

1

1

2

3

2

1

2

1

2

1

2

3

1

()

2

,

1

2

5%

3

10%

4

5

1

50%

50%

1

50%

2

3

4

2

33

5%

7%

3%

25%

2,000

100.00%

200

100.00%

	47,500.16	33,412.05
	251,614,488.60	270,311,360.20
	11,415,998.03	23,297,502.59
	263,077,986.79	293,642,274.84

6,737,011.09

	9,724,372.82	10,871,832.82
	9,724,372.82	10,871,832.82
	/	/

	/	3,313,419.00
	/	/
	39,407,134.22	215,885.00
	/	/
	39,407,134.22	3,529,304.00

1 35,877,830.22 1,016.57%

2

1

56,939.00	22.29%	2,846.95	298,207.60	100.00%	14,910.38
198,469.52	77.71%	39,693.90	/	/	/
/	/	/	/	/	/
/	/	/	/	/	/
255,408.52	100.00%	42,540.85	298,207.60	100.00%	14,910.38

1

2

5% 5%

3

4

	134,200.73			52.54%
	49,953.81			19.56%
	17,923.82			7.02%
	9,590.67			3.76%
	5,660.00			2.22%
	217,329.03	/	/	85.10%

1

1,040,216.23	93.25%	121,410.61	100.00%
75,301.11	6.75%	/	/
/	/	/	/
/	/	/	/
1,115,517.34	100.00%	121,410.61	100.00%
/	/	/	/
1,115,517.34	/	121,410.61	/

1

994,106.73 818.80%

2 5% 5%

3 1 74,932.86

1

2,461,749.36	64.71%	128,447.46	28,321,823.15	94.35%	216,068.66
158,325.22	4.16%	28,305.04	166,580.23	0.55%	

/	/	/	/
317,494,465.28	70,086,844.16	143,219,054.06	244,362,255.38

15,000,000.00	/	50,000,000.00	/
19,448,276.52	19,448,276.52	19,448,276.52	19,448,276.52
34,448,276.52	19,448,276.52	69,448,276.52	19,448,276.52

1

15,000,000.00	/	50,000,000.00	/
15,000,000.00	/	50,000,000.00	/
19,448,276.52	19,448,276.52	19,448,276.52	19,448,276.52
10,857,482.71	10,857,482.71	10,857,482.71	10,857,482.71
8,590,793.81	8,590,793.81	8,590,793.81	8,590,793.81
/	/	/	/
34,448,276.52	19,448,276.52	69,448,276.52	19,448,276.52

3

2

34,448,276.52	/	69,448,276.52
34,448,276.52		69,448,276.52
19,448,276.52	/	19,448,276.52
19,448,276.52	/	19,448,276.52
15,000,000.00		50,000,000.00

/	/	/	/
4,000,000.00	11.61%	4,000,000.00	5.76%
2,039,970.80	5.92%	2,039,970.80	2.94%
670,742.08	1.95%	670,742.08	0.97%
1,839,954.78	5.34%	1,839,954.78	2.65%
25,897,608.86	75.18%	60,897,608.86	87.68%
34,448,276.52	100.00%	69,448,276.52	100.00%
19,448,276.52	/	19,448,276.52	/
/	/	/	/
19,448,276.52	/	19,448,276.52	/
15,000,000.00	/	50,000,000.00	/

/	19,448,276.52	/	18,548,276.52
/	226,922.00	/	904,867.00
/	/	/	/
/	/	/	/
/	226,922.00	/	4,867.00
/	226,922.00	/	4,867.00
/	/	/	/
/	/	/	/
/	19,448,276.52	/	19,448,276.52

/	/
142,736,839.21	175,883,767.25

128,754,839.21	163,515,767.25
13,982,000.00	12,368,000.00
142,736,839.21	175,883,767.25

/	/	/	/
216,010,000.00	216,010,000.00	/	/
216,010,000.00	216,010,000.00	/	/
/	/	/	/
216,010,000.00	216,010,000.00	/	/

2010.4.30-2012.4.30	8.50%	10,000,000.00
2010.4.30-2012.4.30	8.50%	17,230,000.00
2010.4.29-2011.5.5	10.44%	59,000,000.00
2010.6.30-2013.6.30	8.00%	50,000,000.00
2010.6.30-2012.6.30	8.00%	9,000,000.00
2010.7.13-2012.7.13	8.50%	50,000,000.00
2010.9.14-2012.3.14	7.50%	780,000.00
2010.11.23-2012.11.23	10.00%	10,000,000.00
2010.10.19-2012.10.19	9.50%	10,000,000.00
/	/	216,010,000.00

1

5,000,000.00	5,000,000.00
93,000,000.00	93,000,000.00
1,000,000.00	1,000,000.00

	99,000,000.00	99,000,000.00
:	/	/
	99,000,000.00	99,000,000.00

2

	5,000,000.00	0.74%	5,000,000.00	/	5,000,000.00	/
	93,000,000.00	2.2905%	93,000,000.00	/	93,000,000.00	/
()	1,000,000.00	/	1,000,000.00	/	1,000,000.00	/
	99,000,000.00	/	99,000,000.00	/	99,000,000.00	/

1,000,000.00

1	7,930,547.95	44,662,634.14	2,601,267.90	49,991,914.19
	7,930,547.95	44,662,634.14	2,601,267.90	49,991,914.19
	/	/	/	/
2	633,037.04	1,143,822.51	9,915.89	1,766,943.66
	633,037.04	1,143,822.51	9,915.89	1,766,943.66
	/	/	/	/
3	/	/	/	/
	/	/	/	/
	/	/	/	/
4	7,297,510.91	43,518,811.63		

	11,007,190.42	2,221,576.00	3,923,824.80	9,304,941.62
	1,923,248.33	440,783.00	102,751.00	2,261,280.33
	714,987.18	187,700.00	9,600.00	893,087.18
	55,513,928.22	3,343,249.54	4,040,781.78	54,816,395.98
2				
	793,678.39	1,079,879.67	/	1,873,558.06
	8,935,681.14	854,025.21	3,727,633.56	6,062,072.79
	1,260,984.49	662,820.43	97,613.45	1,826,191.47
	187,739.73	149,885.06	7,296.48	330,328.31
	11,178,083.75	2,746,610.37	3,832,543.49	10,092,150.63
3				
	/	/	/	/
	/	/	/	/
	/	/	/	/
	/	/	/	/
	/	/	/	/
4				
	41,074,823.90	493,190.54	1,084,485.65	40,483,528.79
	2,071,509.28	5,949,209.56	4,777,850.01	3,242,868.83
	662,263.84	538,396.45	765,571.43	435,088.86
	527,247.45	194,996.48	159,485.06	562,758.87
	44,335,844.47	7,175,793.03	6,787,392.15	44,724,245.35
1	1,762,800.00	/	/	1,762,800.00
	1,762,800.00	/	/	1,762,800.00
2	142,693.66	176,280.00	/	318,973.66
	142,693.66	176,280.00	/	318,973.66
3	/	/	/	/
	/	/	/	/
4	1,620,106.34	/	176,280.00	1,443,826.34

1,620,106.34 / 176,280.00 1,443,826.34

		1,564,884.46		1,685,875.31
		541,616.86		3,154,474.81
		1,962,503.35		2,266,277.76
		399,607.96		2,730,266.92
		286,977.46		1,150,885.77
		1,105,476.56		1,422.14
		3,173,102.23		512,506.50
		2,390,048.26		/
		11,424,217.14		11,501,709.21

		386,890.58	386,890.58	386,890.58	386,890.58
		/	/	2,358,493.54	/
		/	/	/	/
		121,935.40	/	158,515.96	/
()		74,653,920.02	/	61,568,187.16	/
		75,162,746.00	386,890.58	64,472,087.24	386,890.58

1 () 10,690,658.76 16.58

%

()

1	1,743,918.76	324,814.19	739,687.50	/	1,329,045.45
2	386,890.58	/	/	/	386,890.58
3	/	/	/	/	/
4	4,999,560.00	/	/	/	4,999,560.00

5	/	/	/	/	/
6	/	/	/	/	/
7	19,448,276.52	/	/	/	19,448,276.52
8	/	/	/	/	/
9	/	/	/	/	/
10	10,871,832.82	/	/	1,147,460.00	9,724,372.82
	37,450,478.68	324,814.19	739,687.50	1,147,460.00	35,888,145.37

1

_____	_____	_____
	/	/
	/	/
	/	160,000,000.00
	25,000,000.00	/
	25,000,000.00	160,000,000.00

2

_____	_____	_____	_____	_____
	25,000,000.00	2010.03.16	2011.03.16	5.841%
25,000,000.00				

_____	_____
31,936,006.31	35,802,156.08
1	5% 5%
2	10%
_____	_____

18,184,784.11 / /

7,652,732.11 30,857,745.18

1 23,205,013.07 75.20%

2 5% 5%

3 10%

800,000.00

864,045.00

1,664,045.00 / /

1	5,864,716.67	28,580,674.27	19,890,325.34	14,555,065.60
2	/	42,720.00	39,160.00	3,560.00
3	1,392,083.88	8,782,724.47	7,257,097.75	2,917,710.60
1	-3,124.40	814,041.43	637,630.41	173,286.62
2	1,365,755.53	5,174,356.42	3,971,189.54	2,568,922.41
3	- 535.22	32,804.74	34,811.96	-2,542.44
4	3,963.41	134,865.49	97,858.22	40,970.68
5	1,703.36	32,688.35	17,318.38	17,073.33
6	-7,120.00	1,088,748.00	1,081,628.00	/
7	31,441.20	1,505,220.04	1,416,661.24	120,000.00
4	152,332.89	4,598,684.00	2,310,146.00	2,440,870.89
5	1,533,070.73	1,447,791.84	625,339.59	2,355,522.98
6	/	/	/	/
7	9,065,111.03	2,643,117.28	3,858,214.91	7,850,013.40

8

/ / / /
/
18,007,315.20 46,095,711.86 33,980,283.59 30,122,743.47

12,115,428.27 67.28%

	10,139,982.32	4,635,141.93
	671,635.89	326,745.68
	276,802.02	128,991.92
21,100,641.04		1,194,263.55
806,860.04		265,812.82
5,288,265.18		6,836,486.97
187,641.99		94,854.81
302,389.08		34,294.64
267,587.65		36,427.04
39,041,805.21		13,553,019.36
	25,488,785.85	188.07%

5,535,874.48 5,736,742.14

232,714,569.66 134,659,954.17

1 165,200,000.00

2 10%

—

165,200,000.00

2006 6 12

439,995,243.46

239,976,258.19

2006 6 17 29

2010 12 31

239,976,258.19

13,004.27

12,052.11

10,993.36

12,050

12,050

2

43,730,280.03

7,472,672.98

/

51,202,953.01

10%

11,822,455.08

3,291,703.16

/

15,114,158.24

5%

81,517,003.66

66,997,739.57

7,472,672.98

/

17,920,651.30

3,291,703.16

119,829,715.79

6,795,950.94

	13,849,602.20	97,898,380.91
	11,965,332.28	24,409,550.17
	60,257,257.53	52,934,878.23
	1,062,021.37	5,685,935.37
	-641,795.31	-3,157,854.62
	27,453,192.88	6,450,398.18
	113,945,610.95	184,221,288.24

1

5%	12,158,710.93	19,285,163.89
7%	810,660.39	1,349,961.45
3%	347,425.89	578,554.95
1	191,516.82	327,959.13
/	-1,542,981.75	2,867,910.75
/	11,965,332.28	24,409,550.17

2

	29,130,275.91	15,185,555.72
	395,887.62	1,311,166.68
	4,373,598.30	4,291,761.75
	2,530,150.60	2,435,457.59
	3,857,908.24	2,483,891.47
	2,204,103.00	2,577,591.00
	2,931,801.75	1,229,649.30
	1,288,136.00	1,999,005.90

13,545,396.11

21,420,798.82

60,257,257.53

52,934,878.23

3

-641,795.31

-4,028,252.96

/

/

/

895,133.00

/

/

/

/

/

/

/

-24,734.66

	/	/
	/	/
	301,109.00	260,221.50
	878,838.65	285,904.20
	592,934.45	207.39%

1

	24,048,086.76	1,290,935.95
	-205,113.11	11,494,324.10
	23,842,973.65	12,785,260.05
	11,057,713.60	86.49%

2

	105,359,977.31	56,435,114.85
	-1,130,420.58	-33,262,132.68
	10,925,954.57	29,492,254.07
	/	1,695,032.05
	14,459,233.87	40,570,076.37
	406,157.92	7,605,448.12
	5,228,193.07	1,021,000.00
	/	/
	95,061,926.44	5,163,743.80
	25%	25%
	23,765,481.58	1,290,935.95
	23,765,481.58	1,290,935.95
	77,492.07	11,494,324.10

/ /

23,842,973.65 12,785,260.05

1

1

		81,517,003.66	43,649,854.80
		-641,795.31	-3,157,854.62
		5,264,914.43	2,962,427.88
		176,280.00	125,863.33
		36,580.56	24,387.04
	-	2,687.55	-597.71
	-	4,416,217.67	-401,694.70
-		1,269,406.24	5,888,801.29
-		-61,887,612.85	-30,552,527.98
	-	77,492.07	13,025,151.68
	-	/	/
	-	37,179,602.10	128,796,023.50
		-35,877,830.22	4,287,415.01
	-	24,207,581.46	3,992,012.88
		/	/
		/	/
	-	104,058,818.72	-164,085,121.40
		/	/
		/	/
		/	/
		159,796,891.84	4,554,141.00

2

/ /

/ /

3

/ /
263,077,986.79 293,642,274.84
293,642,274.84 263,584,280.72
/ /
/ /
-30,564,288.05 30,057,994.12

2

1

/ /
/ /
/ /
/ /
/ /
/ /
/ /
/ /
/ /

2

/ 12,704,137.75
/ /
/ 46,966,554.91
/ -34,262,417.16
/ 11,534,132.05
/ 592,456,926.22
/ 2,172,032.36
/ 583,094,826.53
/ /

3

3

1	_____	_____	_____
		263,077,986.79	293,642,274.84
		47,500.16	33,412.05
		251,614,488.60	270,311,360.20
		11,415,998.03	23,297,502.59
2		/	/
3		263,077,986.79	293,642,274.84

4

	_____	_____
		167,500,000.00
		3,100,000.00
		170,600,000.00

5

	_____	_____
		2,521,147.98
		12,508,046.70
		15,029,194.68

1

	_____	_____	_____
		81,517,003.66	43,649,854.80
		43,355,197.99	26,280,661.70
N		81,517,003.66	43,649,854.80
E		742,851,757.06	596,078,630.48
E0		596,078,630.48	492,455,870.06
E		/	/
E		/	/

E		65,256,122.92	59,972,905.62
M0		12	12
M		/	/
M		/	/
M		/	/
		358,413,026.00	358,413,026.00
0		358,413,026.00	358,413,026.00
1		/	/
		/	/
		/	/
		/	/
	= / E0+N 2+E M M0-E M M0 E M M0	12.18%	8.02%
	= / E0+N 2+E M M0-E M M0 E M M0	6.48%	4.83%
=	= 0+ 1+ M M0- M M0-	0.2274	0.1218
=	= 0+ 1+ M M0- M M0-	0.1210	0.0733
	-	/	/
1-		75.00%	75.00%
		/	/
		0.2274	0.1218
		0.1210	0.0733
	= +	-	1-
	/ 0+ 1+ M M0- M M0- +		
2			
3			
1		-4,235,405.66	96,778,097.24

		-1,058,851.42	24,194,524.31
		34,147,800.92	1,858,276.53
		-37,324,355.16	70,725,296.40
2		/	/
		/	/
		/	/
		/	/
3		/	/
		/	/
		/	/
		/	/
4		/	/
		/	/
		/	/
5		/	/
		/	/
		/	/
		/	/
		-37,324,355.16	70,725,296.40

-	11,056,994.50	4.86%

1							
---	--	--	--	--	--	--	--

1,570,086.07	63.16%	78,504.29	32,723,282.75	95.98%	390,538.14
58,400.00	2.35%	11,680.00	154,230.23	0.45%	30,846.05
100,441.07	4.04%	50,220.55	3,505.77	0.01%	1,752.88
756,953.75	30.45%	756,953.75	1,212,467.98	3.56%	1,212,467.98
2,485,880.89	100.00%	897,358.59	34,093,486.73	100.00%	1,635,605.05
		31,607,605.84	92.71%		

2,400 2010 3 29

3

	706,742.10	28.43%
	271,172.00	10.91%
	140,000.00	5.63%
	107,500.00	4.32%
	100,441.07	4.04%
	1,325,855.17	53.33%

1

	5,000,000.00	5,000,000.00
	93,000,000.00	93,000,000.00
	20,000,000.00	20,000,000.00
	2,000,000.00	2,000,000.00
	1,000,000.00	1,000,000.00
	121,000,000.00	121,000,000.00
	/	/
	121,000,000.00	121,000,000.00

2

5,000,000.00	0.74%	5,000,000.00	/	5,000,000.00	/
11,000,000.00	2.2905%	93,000,000.00	/	93,000,000.00	/
20,000,000.00	100.00%	20,000,000.00	/	20,000,000.00	/
2,000,000.00	100.00%	2,000,000.00	/	2,000,000.00	/
1,000,000.00	/	1,000,000.00	/	1,000,000.00	/
39,000,000.00	/	121,000,000.00	/	121,000,000.00	/

1,000,000.00

1	1,635,605.05	/	738,246.46	/	897,358.59
2	386,890.58	/	/	/	386,890.58
3	/	/	/	/	/
4	4,999,560.00	/	/	/	4,999,560.00
5	/	/	/	/	/
6	/	/	/	/	/
7	19,448,276.52	/	/	/	19,448,276.52
8	/	/	/	/	/
9	/	/	/	/	/
10	10,871,832.82	/	/	1,147,460.00	9,724,372.82
	37,342,164.97	/	738,246.46	1,147,460.00	35,456,458.51

6,795,950.94	10,499,197.78
69,000,129.61	43,255,366.95
66,696,680.25	57,079,742.51
-4,416,217.67	401,694.70

/	-206.29
/	/
23,046,870.60	1,406,888.00
161,123,413.73	112,642,683.65
48,480,730.08	43.04%

5,105,367.10	5,647,834.79
51,850,670.08	32,287,516.31
/	37,729,545.91
/	/
2,633,193.07	/
/	-19,461,465.80
7,107,450.00	876,311.30
66,696,680.25	57,079,742.51

8,506,144.83	5,459,726.08
52,114,929.15	45,916,593.45
-965,168.46	1,459,582.10
16,164,558.37	374,249.95
75,820,463.89	53,210,151.58

1

1

65,834,063.12	54,845,614.33
-965,168.46	1,459,582.10
3,905,050.87	2,416,901.40

			176,280.00	125,863.33
			/	/
		-	233.31	-597.71
	-		4,416,217.67	-401,694.70
	-		/	/
	-		-61,887,612.85	-53,952,582.72
	-		-1,008,574.96	7,593,752.48
	-		/	/
	-		/	/
	-		-35,877,830.22	4,287,415.01
	-		31,823,247.84	-2,496,420.53
			/	/
			/	/
	-		30,474,037.67	-15,901,037.04
			/	/
			/	/
			/	/
			36,889,943.99	-2,023,204.05
2			/	/
			/	/
			/	/
3			236,310,245.35	267,512,353.25
			267,512,353.25	151,414,930.13
			/	/
			/	/
			-31,202,107.90	116,097,423.12

1	236,310,245.35	267,512,353.25
	23,518.59	14,670.65
	224,870,730.01	244,200,180.65
	11,415,996.75	23,297,501.95
2		

3

		%				%
	2,000	100.00	/	/	2,000	100.00
	200	100.00	/	/	200	100.00

3

1

2006 6 12

239,976,258.19

2010 12 31	239,976,258.19	130,042,679.52	
	9,521,531.10	120,521,148.42	109,933,578.67

2009 9 27

16,000 4.86% 6

1.6

2,500 0.48675% 12

2

2010 12 31 1.58

2010 12 31

10

2010 12 31 5

3

%

2

	<u>2010</u>	<u>2009</u>
1	2,490,012.58	-3,434,927.87
1	2,492,700.13	1,740,167.48
	2,454.24	597.71
	2,490,245.89	1,739,569.77
2	2,687.55	5,175,095.35
	2,687.55	221.50
		5,174,873.85
2		/
3		/
4		/
5		/
6		/
7		/
8		/
9		/
10		-8,842,420.04
11		/
12		/
13		/
14		
	49,255,670.08	32,689,211.01
1		401,694.70
2		/
3		21,630,000.00
4	49,255,670.08	10,657,516.31

15			/
16			/
17			/
18			/
19			/
20		-863,275.10	2,747,061.03
1		12,876.00	3,032,743.73
			-38,966.67
		12,876.00	3,071,710.40
2		876,151.10	285,682.70
		575,042.10	25,682.70
		301,109.00	260,000.00
21			/
			/
		50,882,407.56	23,158,924.13
		12,720,601.89	5,789,731.03
		38,161,805.67	17,369,193.10

2008 43

1

1 4,489,583.34

2 5,105,367.10

9

2010

12.18%

0.2274

0.2274

2009

6.48%	0.1210	0.1210
8.02%	0.1218	0.1218
4.83%	0.0733	0.0733

2010

1

2010 12 31

	1,373,362,949.17	828,214,546.14		-	-
	-	-		-	-
	4,597,472,693.05	2,558,163,703.43		-	-
	-	-		2,197,102.53	1,062,456.10
	632,705,556.60	20,000,000.00		-	405,675.44
	-	-		835,509.00	174,828.25
	-	-		609,347.75	375,177.30
	-	-		42,280,598.67	18,210,908.30
	-	-		-	-
	23,042,020.11	83,350,713.20		-	-
	3,671,430,000.00	2,958,179,000.00			
	-	-			
	1,526,800,000.00	1,478,440,000.00			
	3,593,960,000.00	3,092,337,700.00		45,922,557.95	20,229,045.39
	-	-	:		
	-	-		20,282,468,906.82	12,180,340,068.89
	-	-		76,263,036.70	24,456,257.52
	-	-		63,149,795.01	192,812,802.24
	1,148,566.28	50,000.00			
	5,047,882,511.27	1,399,102,511.27		20,421,881,738.53	12,397,609,128.65
	20,467,804,296.48	12,417,838,174.04		20,467,804,296.48	12,417,838,174.04

2

2010 12

	869,572,018.39	641,587,183.21
	203,977,105.17	163,457,509.57
" - ")	442,509,595.72	450,827,903.89
" - ")	-69,412,340.52	20,654,544.30
" - ")	-	-
	292,497,658.02	6,647,225.45
	169,970,143.62	66,424,043.36
	-	-
	3,412,705.36	609,160.67
	-	428,505.04
	165,184,617.26	65,386,377.65
	-	-
	1,372,821.00	-
" - ")	699,601,874.77	575,163,139.85
	-	-
	-	-
" - ")	699,601,874.77	575,163,139.85
	192,812,802.24	10,969,172.68
	892,414,677.01	586,132,312.53
	829,264,882.00	393,319,510.29
	63,149,795.01	192,812,802.24

	63,270.56	3.09		626,273.85	30.61
	367,143.00	17.94		110,607.00	5.40
	152,680.00	7.46		625,372.05	30.55
	359,396.00	17.56		8,467.34	0.41
	504,903.11	24.67			
	2,304.20	0.11			
	2,046,780.43	100		2,046,780.43	100

427,878.00

63,322.06

13,588.19

114.86

	195,930.46	643,726.94
	959,631.98	1,371,016.52
	86,221.38	32,036.97
	1,241,783.82	2,046,780.43

1

	133,287.18	539,847.80
	0	49,050.73
	273,129.27	799,358.89
	64,466.68	64,245.15
	470,883.13	1,452,502.57

2

	285,316.10	212,650.10
	309,234.84	308,972.46
	99,078.05	54,538.82

	77,271.70	18,116.48
	770,900.69	594,277.86

1

			%
	11	53,108.00	0.56
	19	418,570.17	2.70
	4	64,029.37	5.25
	34	535,707.54	2.80

2

	7	35,080.00	0.93 %	-2.51%
	0	0	0	0
	18	307,553.80	0.75%	4.61%
	0	0	0	0

3

	1	9,966.37	0.11%	-33.44%
	1	1,029.37	0	83.47%
	4	119,078.00	0.40%	4.36%
	3	63,000.00	0.30%	3.97%

--	--	--

	52	508,029.00
	23	1,003,370.60
	2	10,528.00
	77	1,521,927.60
	76	1,513,999.60
	1	4,528.00

1

	165,799.00	150,000.00	150,000.00	165,799.00
	165,799.00	150,000.00	150,000.00	165,799.00

2

)	()
0	0	0

3

()	()	()
0	0	0

2006 2 15

1 ---

38

	%
	0.49